



Implementing Continuing Medical Education Certification: A Comprehensive Guide

Introduction

This presentation provides a **comprehensive guide** to implementing **Continuing Medical Education (CME)** certification. We will explore the importance of CME, the steps involved in certification, and best practices to ensure effective learning outcomes for healthcare professionals.



Understanding CME

Continuing **Medical** Education (CME) is essential for **healthcare professionals** to maintain their **licensure** and stay updated with the latest medical advancements. It ensures that practitioners provide the highest quality of care to patients through ongoing learning.



CME Certification Importance

CME certification is crucial as it validates the **quality** and **relevance** of educational activities. It helps institutions meet regulatory requirements and enhances the **credibility** of the educational programs offered to healthcare providers.



Regulatory Bodies

Understanding the role of **regulatory bodies** is vital in CME certification. Organizations like the **ACCME** and state medical boards establish guidelines that ensure CME activities meet established standards for quality and effectiveness.



Identifying Learning Needs

Conducting a **needs assessment** is the first step in developing CME activities. This involves gathering data on the knowledge gaps and professional practice issues faced by healthcare providers to tailor educational offerings effectively.



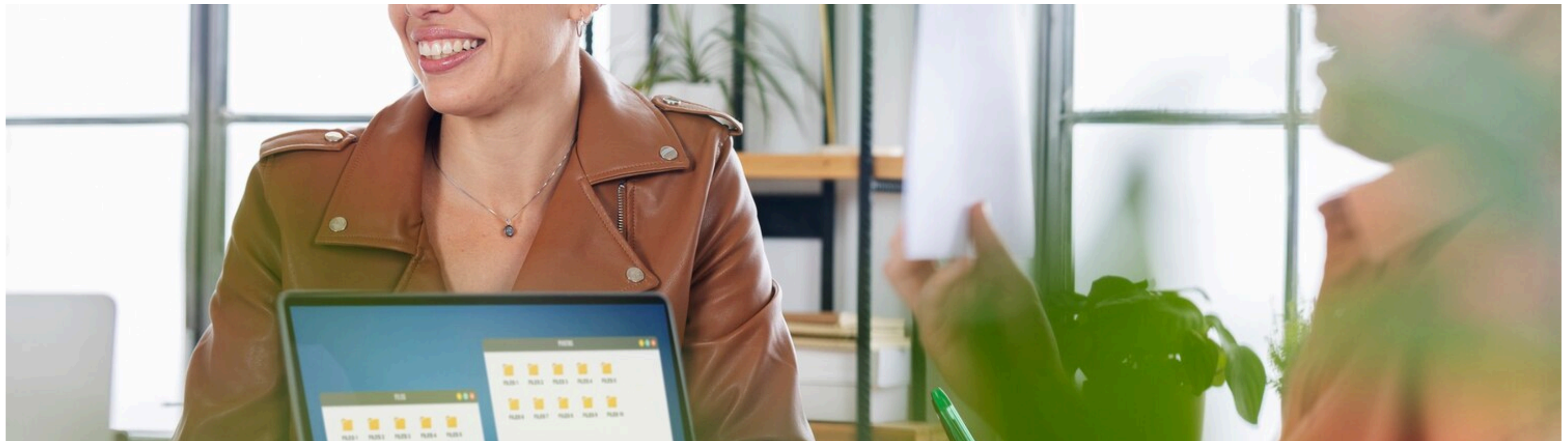
Developing CME Activities

Once learning needs are identified, the next step is to design **educational activities** that are engaging and relevant. This includes selecting appropriate formats such as workshops, online courses, and conferences to maximize learning impact.



Implementation Strategies

Effective implementation of CME activities requires careful planning and **logistical coordination**. This includes scheduling, resource allocation, and ensuring that all materials are prepared and accessible to participants before the event.



Evaluation Methods

Evaluating the effectiveness of CME activities is crucial for continuous improvement. Use tools like **surveys**, assessments, and participant feedback to measure learning outcomes and identify areas for enhancement.



Accreditation Process

The **accreditation process** involves submitting CME activities for review by recognized accrediting bodies. This ensures that the programs meet established criteria and are worthy of certification, enhancing their value to participants.



Challenges in CME Implementation

Implementing CME certification can present challenges such as **budget constraints**, participant engagement, and compliance with regulatory requirements. Identifying these obstacles early can help in developing effective solutions.



As technology evolves, the future of CME will likely include more **interactive** and **personalized learning experiences**. Innovations such as virtual reality and mobile learning platforms will enhance accessibility and engagement.

Future Trends in CME





Conclusion

In conclusion, implementing CME certification is a vital process that enhances the **professional development** of healthcare providers. By following best practices and staying abreast of trends, organizations can ensure effective and impactful CME activities.

Thanks!

Do you have any questions?

dr.enev@drenev.com

+359 89 986 3477

worldmedicalregister.com

